

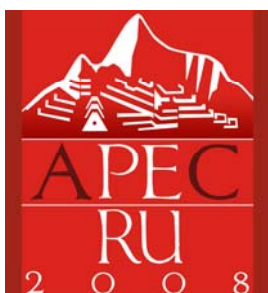


**Asia-Pacific
Economic Cooperation**

2008/SCCP/SWWG/018

World Customs Organization (WCO) Customs Data Model

Purpose: Information
Submitted by: WCO



**Single Window Working Group Meeting
Singapore
28-30 January 2008**



WCO Customs Data Model

Introduction to the WCO DATA MODEL



WCO Customs Data Model

- **Security and trade facilitation**
- **Introduction to the modelling**
- **Revised Kyoto Convention**
- **WCO ISCM Guidelines**
- **WCO Customs Data Model**
- **Conclusions**



Security and Trade facilitation

- **Resolution I (2002) – WCO Task Force**
 - **Develop Standards**
 - *HARMONIZED PROCEDURES = revised Kyoto Convention and WCO Business Partnership Guidelines*
 - *HARMONIZED CUSTOMS CONTROL = common risk management/assessment/profiles*
 - *HARMONIZED DATA REQUIREMENTS = WCO Data Model*
 - *COMMON ACCESS KEY = UCR*
- **Resolution II (2004) – WCO High-level Strategic Group**
 - **Implement Standards/Capacity Building**
 - **SAFE Framework of Standards**

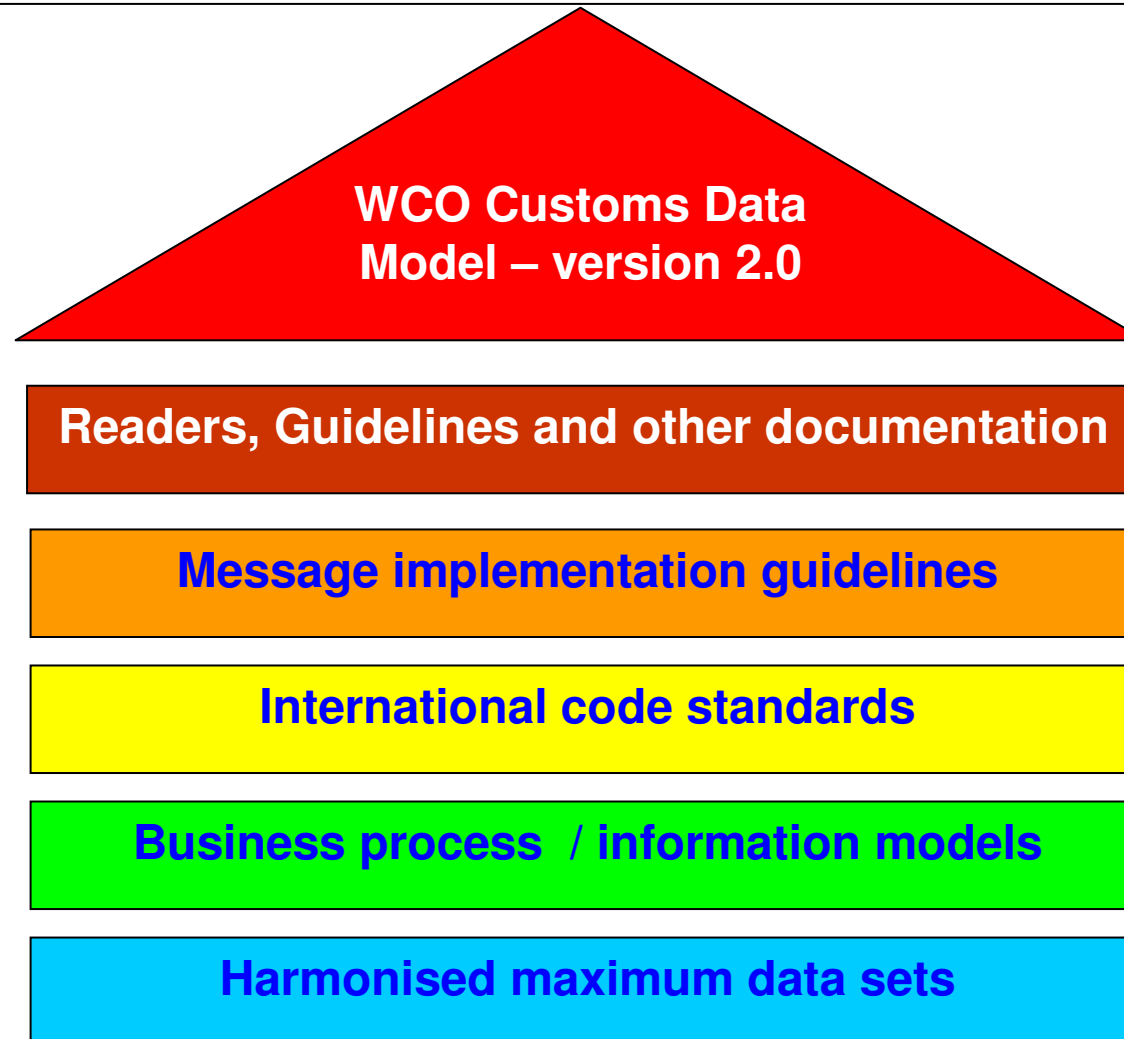


Revised Kyoto Convention

- **Selectivity based on risk management**
- **Audit-based controls**
- **Pre-arrival processing**
- **Limit information to that necessary to ensure compliance with Customs law**
- **Electronic submission of declarations and supporting documents**
- **Use of international standards**



WCO Data Model elements





Business process and Information modelling

Unified Modelling Language (UML)

↪ **Simple Business Process Model**

↪ **Use Case Diagram**

↪ **Use Case Description**

↪ **Activity Diagram**

↪ **Sequence Diagram**

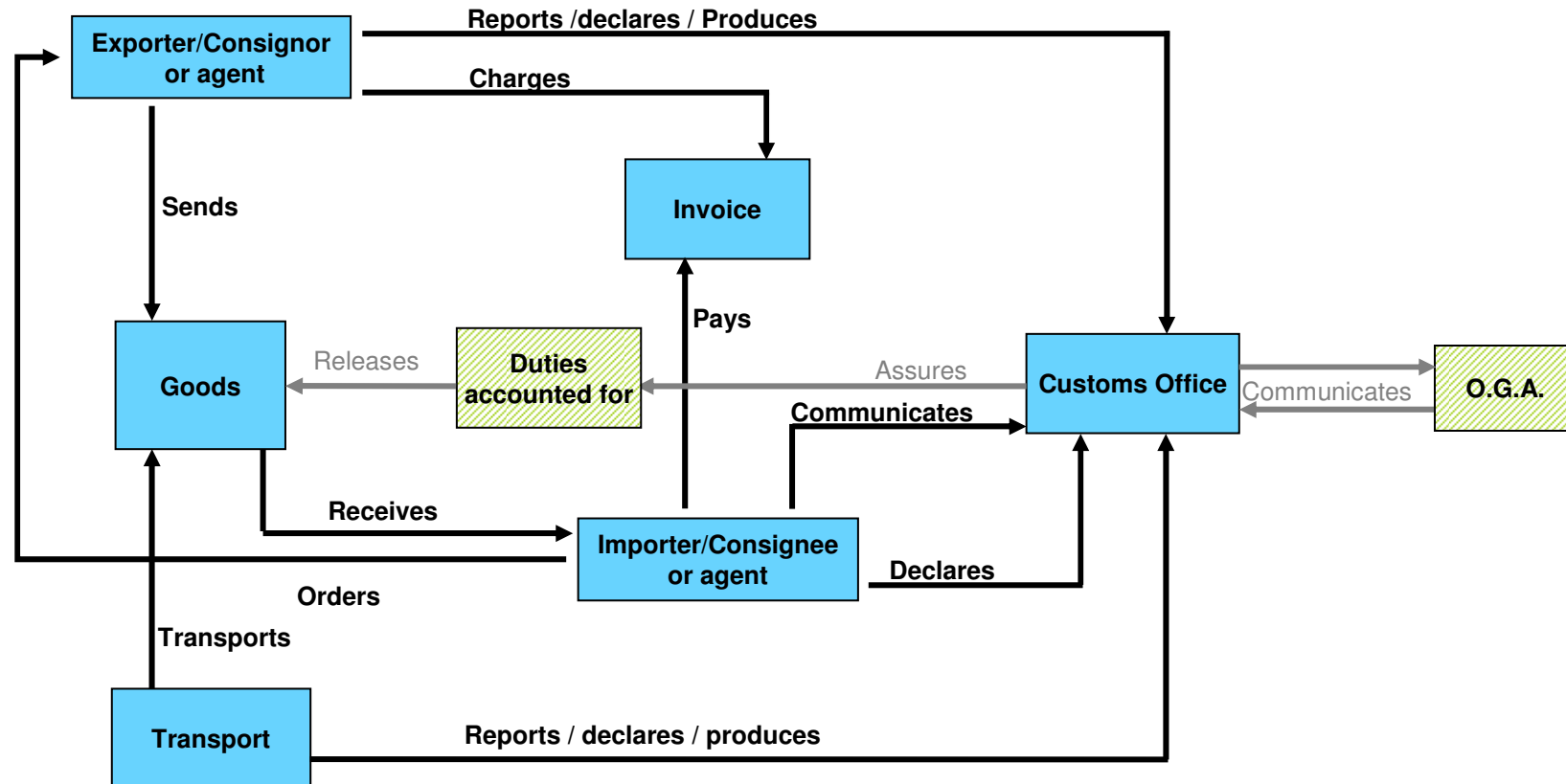
↪ **Class Diagram**

Revised Kyoto
Convention

WCO Data sets for
imports, exports and
transit.

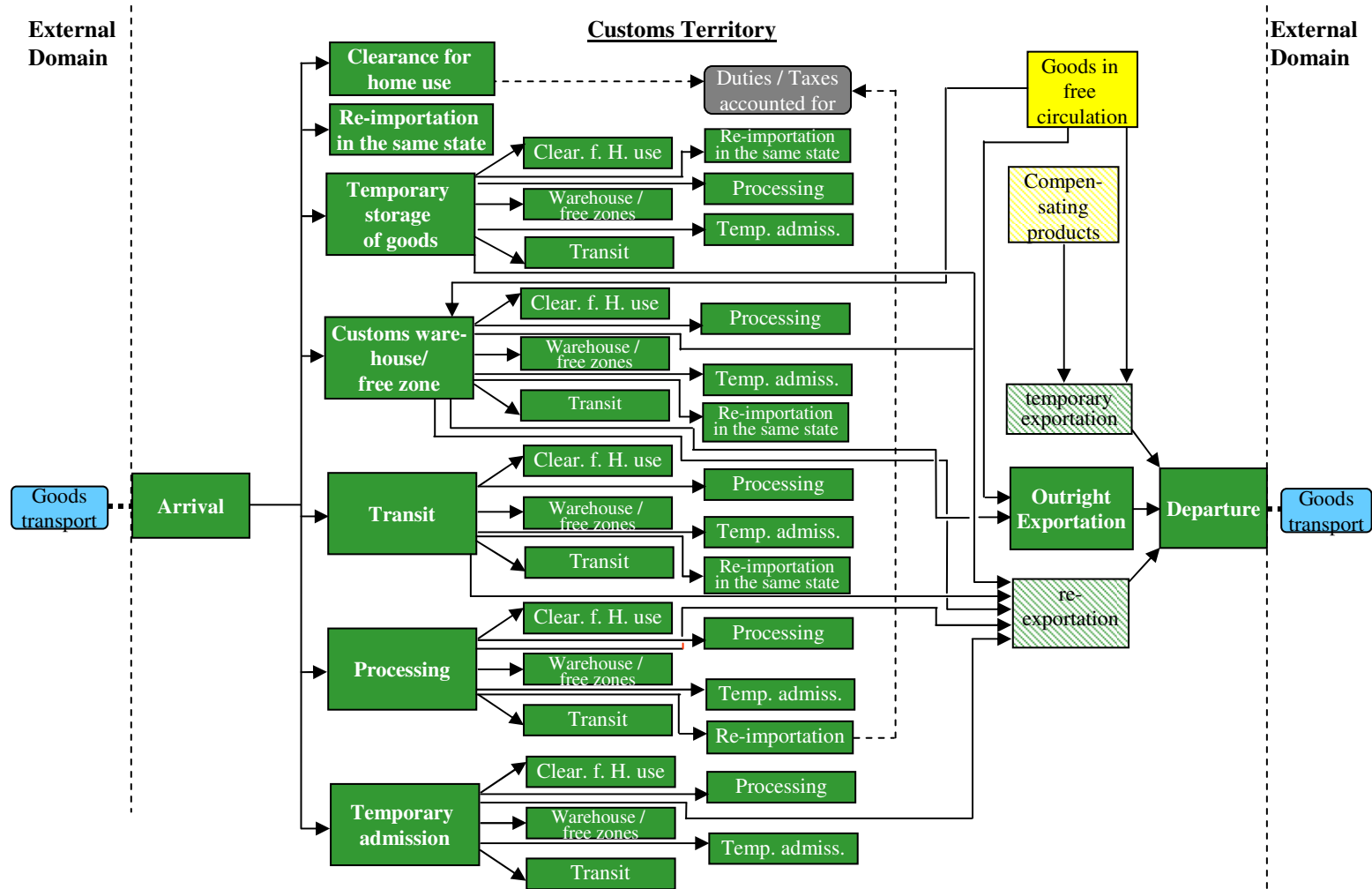


Simple business process



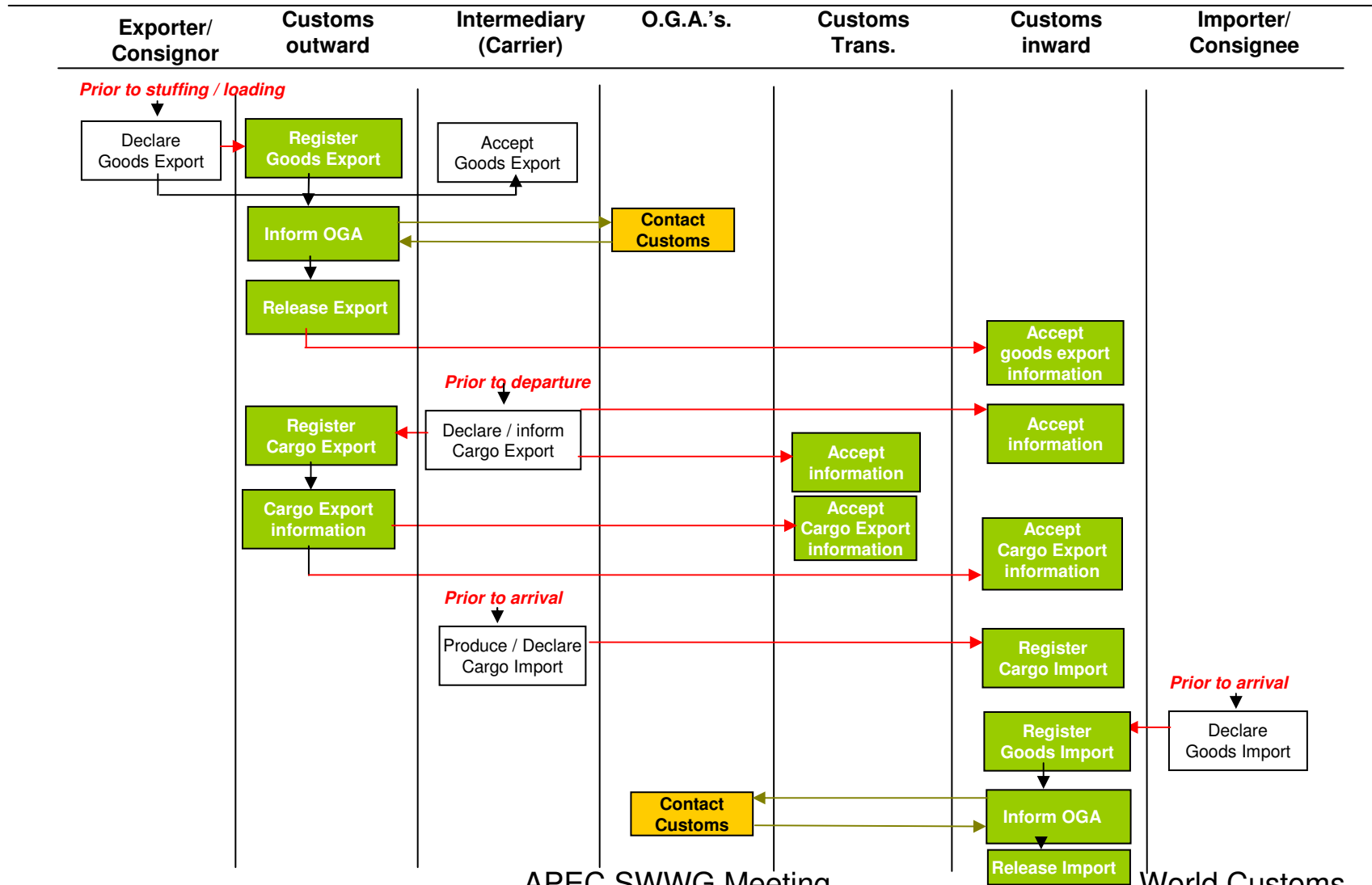


Revised Kyoto Convention global modal

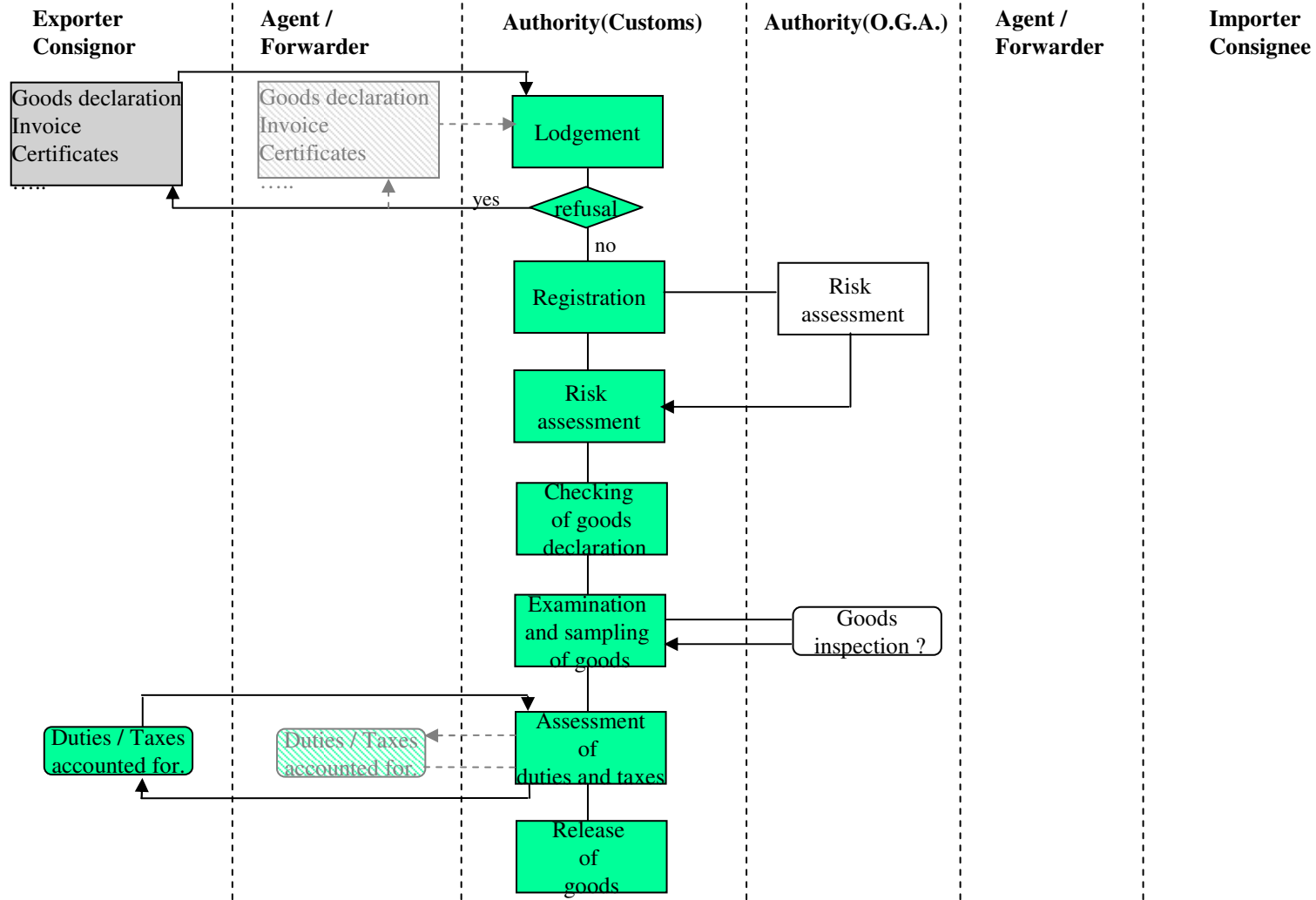




Activity Diagram (ISCM)

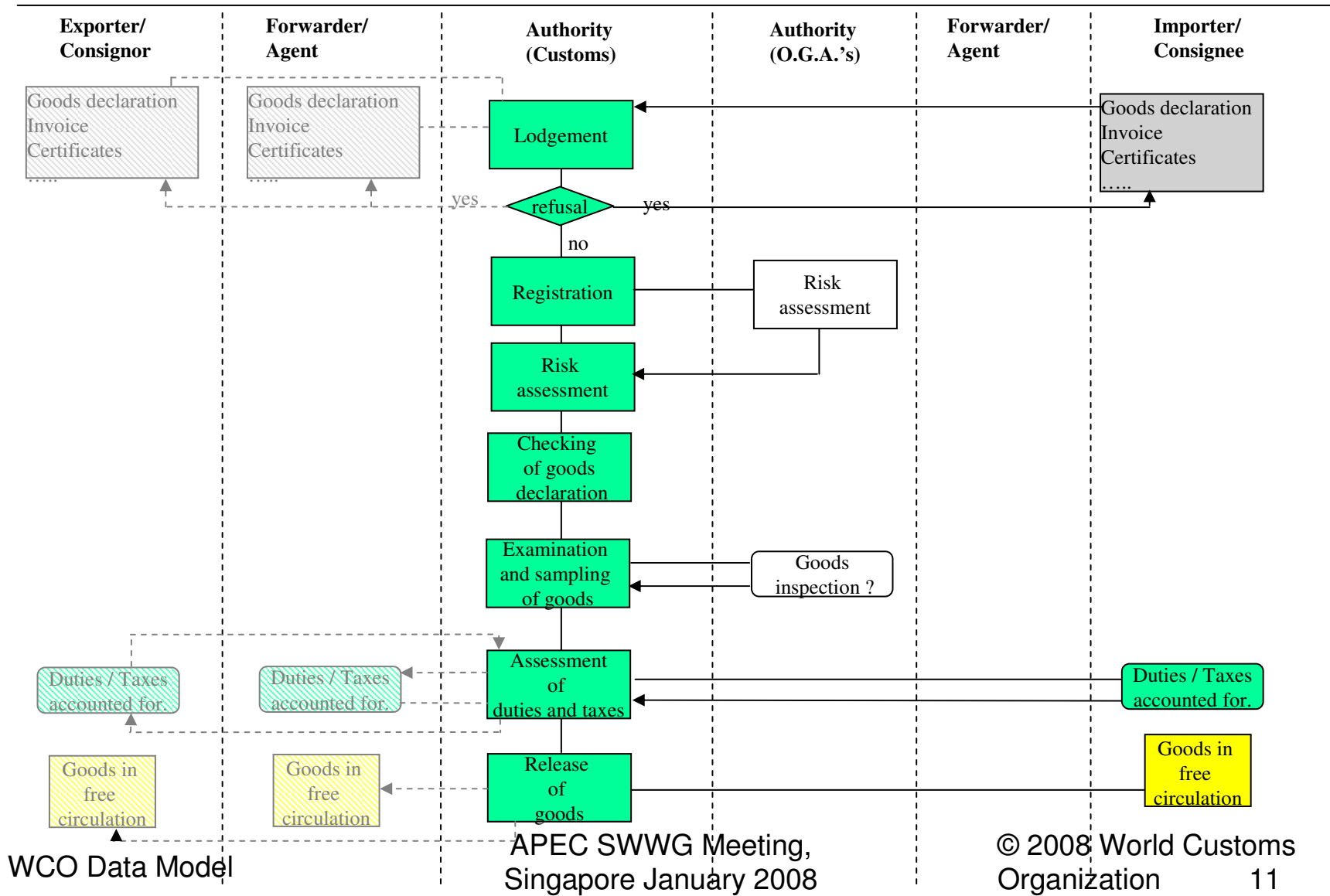


Activity Diagram (outright exportation)

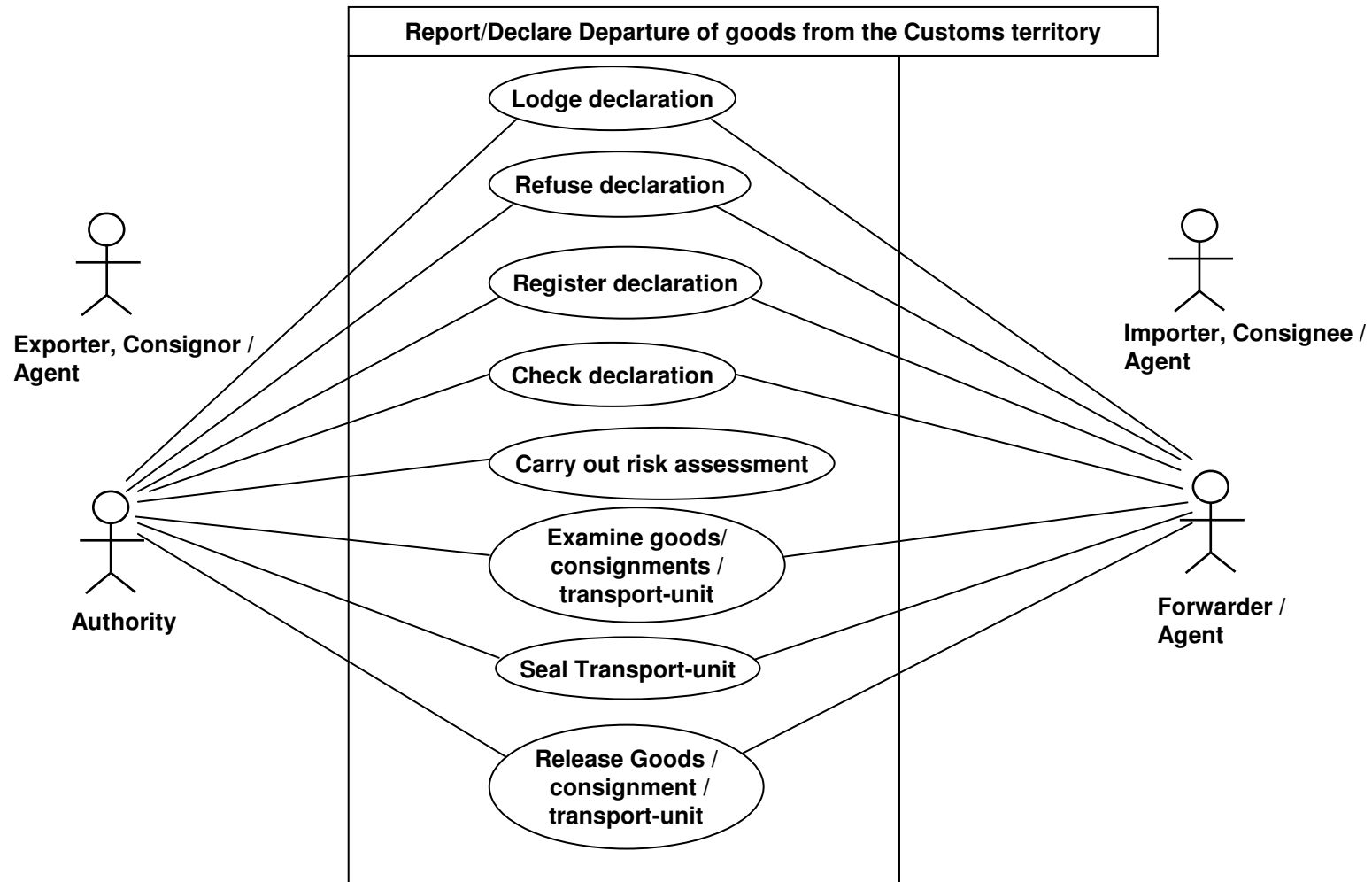




Activity Diagram (clearance for home use)



Use Case Diagram (departure)



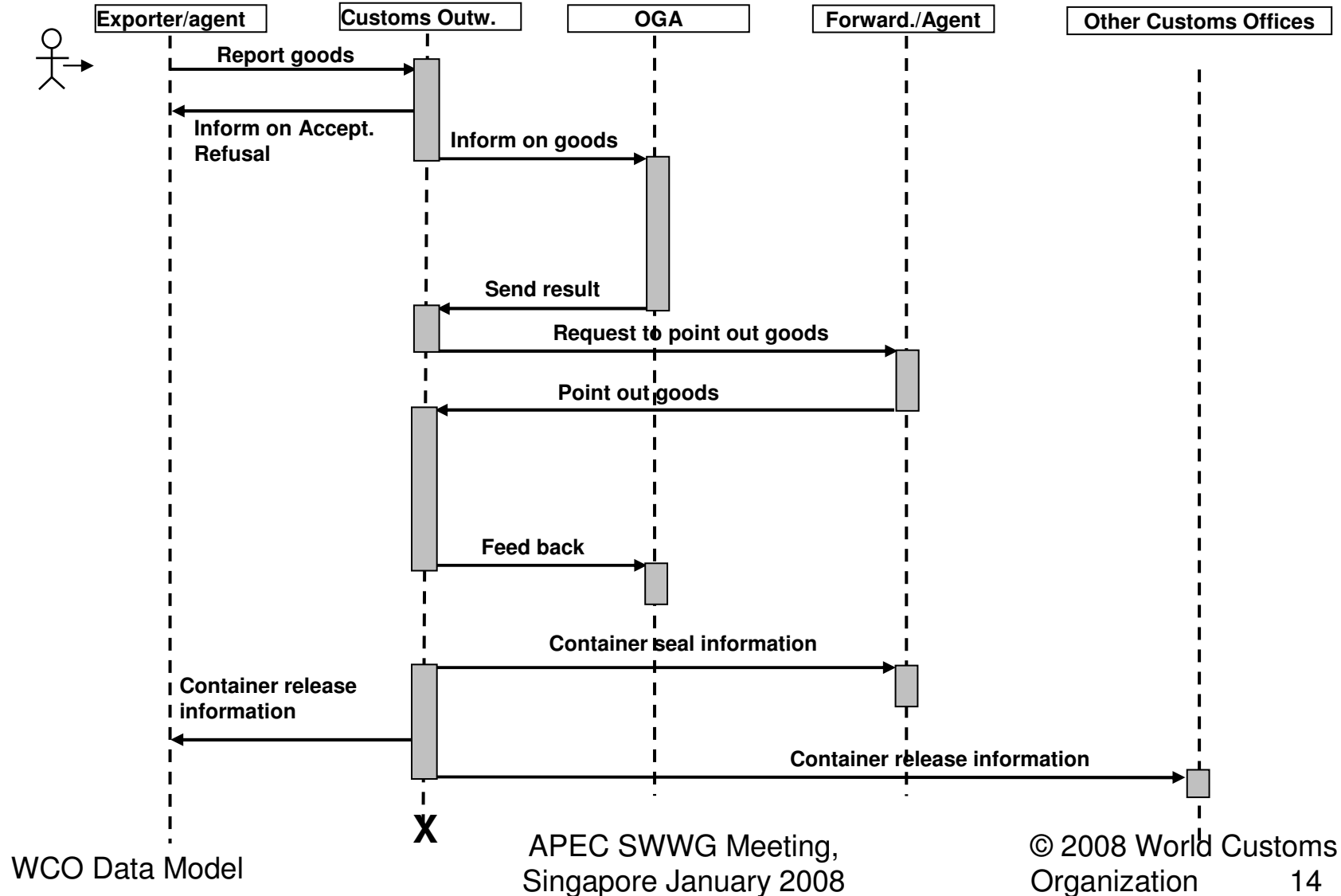


Use Case Description (departure)

Name	Departure of goods from the Customs Territory
Traceability Ind.	
Actors	<p>Supplier: Consignor, Invoicer, Payee, Seller Agent: Customs Agent, Customs Broker, Declarant, Bank, Credit agency, PSI Company, Insurer Transporter : Freight forwarder, Carrier Authority: Customs, Other Government Agencies such as Health, Immigration, Veterinary, Agricultural. Customer: Buyer, Consignee, Invoicee, Orderer</p>
Description	The necessary arrangements are made to enable goods - and the means of transport for commercial use- to leave the Customs territory
Pre-condition	Goods were subject to an outright Exportation declaration.
Post-condition	Goods -and the means of transport for commercial use- have left the Customs territory.
Scenario 1	<p>Starts when Goods arrive at the Customs Office of departure</p> <ul style="list-style-type: none"> -Prior to departure Supplier/Carrier/Agent declares/reports all goods for outward transport to Authority (Customs office outward) by means of a cargo declaration/declaration of departure/notification* -Authority (Customs) carries out a technical assessment on the format and content of the cargo declaration / declaration of departure / notification # -Authority (Customs) informs Supplier/Carrier/Agent about the acceptance or refusal of the cargo declaration/declaration of departure/notification # -Authority (Customs) records the cargo declaration/declaration of departure/notification -Authority (Customs) informs Authority (OGA)*2 # -Authority (OGA) performs risk assessment *2 # -Authority (Customs) compares cargo declaration/declaration of departure/notification with Goods export information # -Authority (OGA) informs Authority (Customs) *2 # -Authority (Customs) carries out risk assessment*2 # -Authority (Customs) co-ordinates container/goods/documents check *2 -Authority (Customs) informs Supplier/Carrier/Agent*2 # -Supplier/Carrier/Agent points out the container/goods*2 # -Authority (Customs) executes container/goods/document check -Authority (Customs) seals container *2 -Authority (Customs) informs Authority (OGA) about the results of the container/goods/documents check*2 # -Authority (Customs) releases the container/goods (and the means of transport) for departure -Authority (Customs) informs Authority (Customs office of transit /Customs office inward/Customs Office inland) # -Authority (Customs) informs Supplier/Carrier/Agent# -Supplier/Carrier/Agent accepts the release information# <p>Ends when Goods (and the means of transport for commercial use) leave the Customs territory.</p>

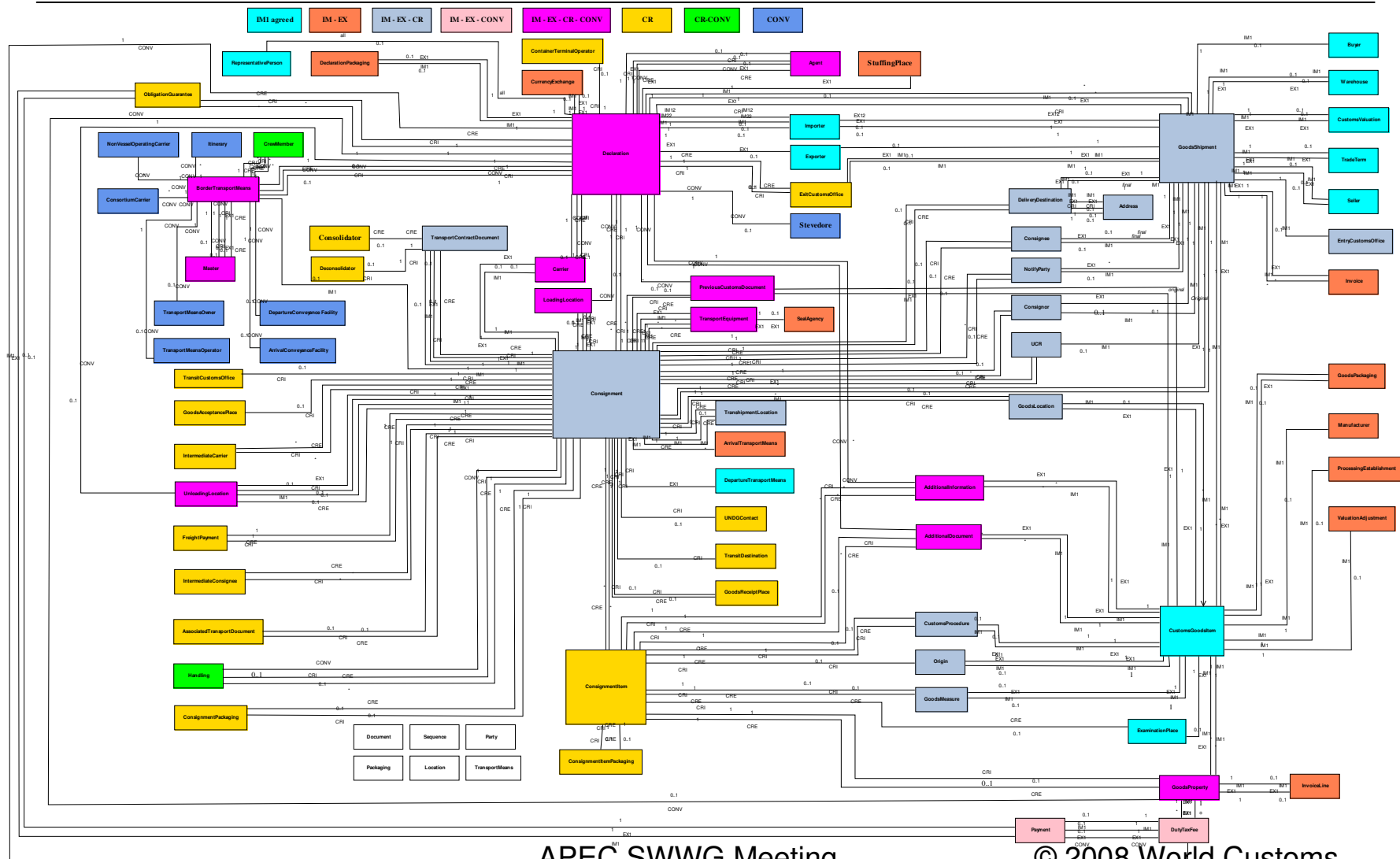


Sequence diagram (departure)





UML overall class diagram



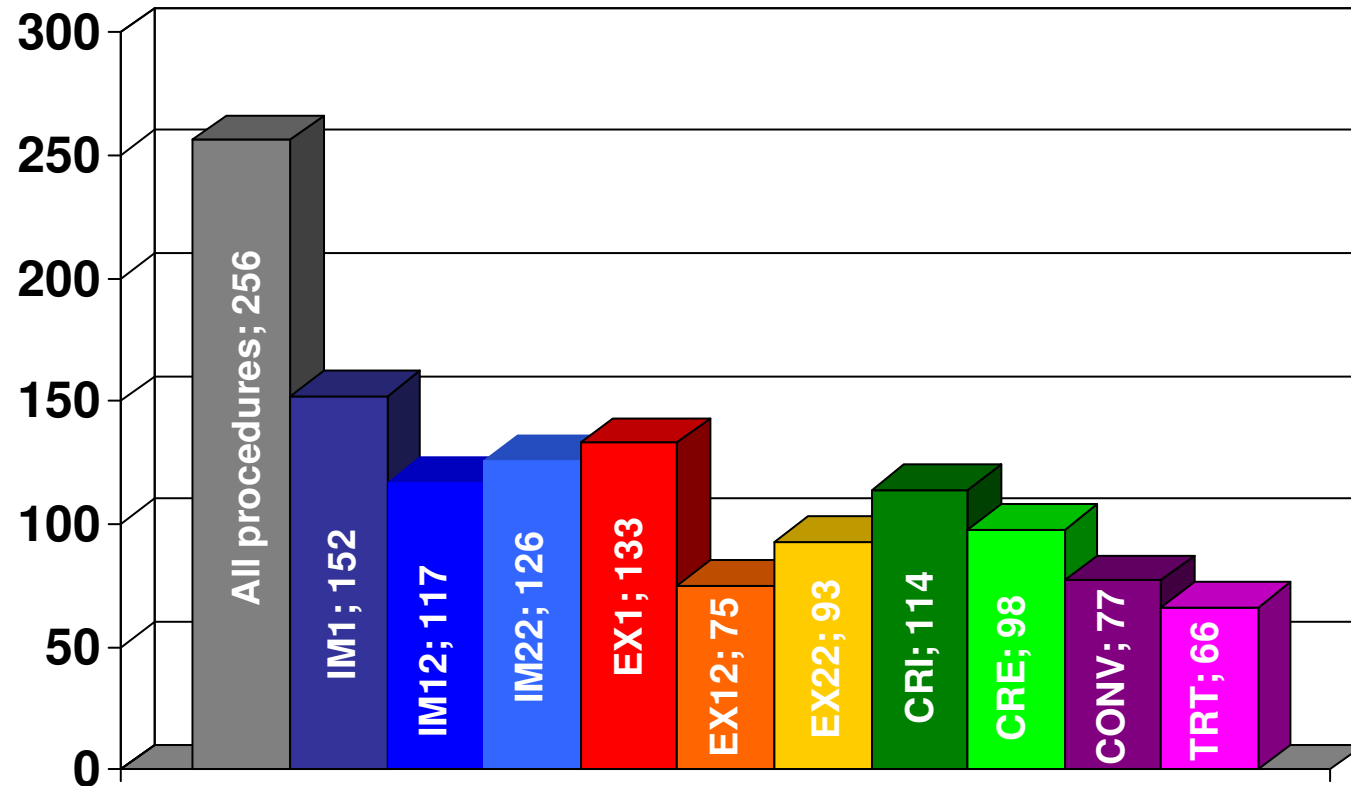


Data Sets

- Maximum data sets – for 10 different procedures – in total 256 data elements
- Based on the 2005 Edition of the UNTDED
- Detailed information about a single data element/requirement
- Information about the format of a data element
- Code remarks → recommended codes
- Synonyms



Data Sets





International Code Standards



- HARMONIZED SYSTEM & UCR
- ISO 3166 COUNTRY CODES
- ISO 4217 CURRENCY CODES
- ISO 6346 CONTAINER CODES



- UN/ECE RECOMMENDATIONS
 - No. 5 - INCOTERMS
 - No. 7 - REPRESENTATION OF DATE/TIME
 - No. 16 - UN/LOCODE
 - No. 19 - MODE OF TRANSPORT
 - No. 20 - UNITS OF MEASURE



Data Model, Benefits

- ✓ **Enables the various information systems to work together in the most effective way possible**
- ✓ **Promoting safe and secure borders**
- ✓ **Offering authorised traders end to end premium procedures**
- ✓ **Contributing to rapid release**
- ✓ **Eliminating redundant and repetitive data**
- ✓ **Reducing the amount of data**
- ✓ **Reducing compliance costs**
- ✓ **Promoting greater Customs co-operation**



Data Model, benefits (2)

- **aligned export and import data requirements**
- **created a single electronic structure**
- **more effective exchange of information between export and import**
- **export information reused at import**
- **includes data requirements of other government agencies**
 - ↳ **Single Window environment**
 - ↳ **traders to submit information only once**



Data Model, what it caters for

The Data Model contains sufficient data elements required and approved by our Member administrations for export, import and transport of Cargo, Goods, Means of Transport and Crew.



Data Model, what it not caters for

Not yet included are:

- **specific transactions/goods movements such as**
 - **military goods transported with a special BOAR or 302 form**
 - **cars (racing/rally) with a Carnet de Passage en Douanes**
 - **goods transported under the ATA convention**
 - **postal consignments with a CN document**
 - **goods transported by rail using railroad documents**
- **all information to conduct a Customs Post Audit Control as such.**



Data Model, Implementation

- **Bilateral or multilateral basis**
- **After close consultation with trade**
- **Collaboration with OGA's (SW environment)**
- **Over time, not overnight**
- **Government, trade & transport to align long-term business and investment plans**
- **UCR critical part of FoS**



Fully Fledged Version 3

- **Customs and OGA (ogd and pgd)**
- **Conveyance report**
- **Cargo report (manifest)**
- **Goods declarations**
 - **import, export and transit (including TIR)**
 - **one step procedures**
 - **two step procedures**
 - **first step for release**
 - **second step for duty collection and statistics (clearance)**



Fully Fledged Version 3 (2)

- **“Single Window Environment”**
- **Covers only those processes directly related to release (Trade calls this “clearance”)**
- **Includes goods, means of transport & crew**
- **Includes “Agriculture” which = SPS, Veterinary, Food & Pharmaceuticals**
- **Agriculture means data required by Government to regulate the transportation and release of prepared foodstuffs, primary produce and live animals**
- **Includes environmentally dangerous waste defined in the Basel Convention, IMO, e-Cert**
- **Guidelines on “WCO Data Harmonisation and Single Window V2”**
- **response messages (not only for Customs)**
- **Considers the implications of XML (XML Guidelines plus schemas)**



THANK YOU

**Ger Diepens,
ger.diepens@wcoomd.org**