



NASDA & Members

A General Overview

February 2012

V3.0

TABLE OF CONTENTS

INTRODUCTION	1
BRIEF HISTORY.....	1
NO ONE MODEL	2
NASDA MEMBER.....	3
AGENCY NAMES	4
REGIONAL ASSOCIATIONS	4
NASDA BOARD	6
MEETINGS	6
COMMITTEES, TASK FORCES & WORKING GROUPS	7
ROLE OF NASDA.....	8
NASDA STAFF.....	8
NASDA FOUNDATION.....	10
NASDA AFFILIATES.....	11
NASDA.ORG	13
APPENDIX A	
SUMMARY TABLE OF PROGRAM AREAS FOR EACH STATE.....	13
APPENDIX B	
TENTATIVE NASDA STAFF ASSIGNMENTS.....	15
APPENDIX C	
NASDA PAST PRESIDENTS 1916 - 2011.....	16

NASDA
V3.0

NASDA Feb. 2012

INTRODUCTION

The National Association of State Departments of Agriculture (NASDA) is a nonprofit, nonpartisan 501(C)(6) association whose members consist of the “Departments of Agriculture” of all fifty states and four territories. The association’s office is located in Washington, DC. Its mission is to represent the state departments of agriculture in the development, implementation, and communication of sound public policy and programs which support and promote the American agricultural industry, while protecting consumers and the environment.

BRIEF HISTORY¹

The National Association of Commissioners of Agriculture was established in May, 1916 in Washington, DC. Fourteen states were represented at this inaugural meeting: Alabama, Georgia, Kentucky, Missouri, New Hampshire, Maine, New York, North Carolina, North Dakota, Pennsylvania, South Carolina, Tennessee, West Virginia, and Virginia.

As is often the case with voluntary organizations, portions of NASDA and regional association history are incomplete and/or difficult to interpret. For example, while the National Association was established in 1916, it functioned without a constitution until 1920. Exactly when the name changed to the National Association of Commissioners, Secretaries and Directors of Agriculture is uncertain; however, a reference to commissioners, secretaries and directors of agriculture is made in the minutes of the 1931 meeting, with the first clear identification of that association name made in the records of the 1934 meeting. During the 1957 annual meeting, the association’s name was changed to the National Association of State Departments of Agriculture. In the early years of the association, members met with the President of the United States as a part of their annual meeting.

The first organization to bring together state agricultural leaders was the Southern Association of Commissioners. It was organized in 1899. That effort secured an endorsement for organizing a national association in 1904, which ultimately lead to the 1916 meeting. The Southern Association functioned from 1899 to 1910 when it was reorganized as the Association of Southern Agricultural Workers. This new organization met in 1911. Records are incomplete regarding activities from 1912 to 1915 when 13 commissioners met to make plans for the May, 1916 national meeting. After organization of the National Association in 1916, the southern association was again inactive until it reorganized in 1933.

The Western states agricultural leaders formed a Western Association in 1922. After its inception, the Western Association became inactive until it was reorganized in 1943. The North Central Association was organized in July 1939.

¹ Efforts to assure historic information is properly archived are underway; e. g., proceedings of meeting from 1939 – 1992 (with a few years missing) are archived in the NASDA office. A History of NASDA, entitled “Proceedings of the National Association of Commissioners, Secretaries and Directors of Agriculture: 1916 – 1955,” was published in 1960. As additional details of the organization and its history are verified, further information will be provided.

A New England Association of commissioners, secretaries and directors of agriculture is known to have been an active organization; however, precisely when it organized is uncertain. The New England Association did not have regular meetings in its earlier years, but did adopt by-laws as the North Eastern Association of State Departments of Agriculture in 1959.

NO ONE MODEL

There is no one model for a state department of agriculture. The size of departments ranges from fifteen employees in Rhode Island and thirty-five employees in New Hampshire to 2000 employees in California and 3500 employees in Florida.

Typical programs center around regulatory and marketing/promotion functions. Regulatory responsibilities found in state departments of agriculture include: animal industry (40 states), apiary (47), egg (36), feed (47), fertilizer and lime (45), food safety (25), grain regulatory (28), state meat inspection (26), milk (47 milk control; 32 dairy regulatory), organic (48), pesticide (43), plant industry (46), seed (47 for seed control; 40 for seed analyst), and weights and measures (35) programs.

Some states also have conservation (20), farmland protection (22), forestry (8) and structural pest control (27) programs. (See Appendix A)

Other programs also exist in the state departments of agriculture, such as: consumer services (Florida, New Mexico, North Carolina, Virginia, Wisconsin), water appropriations (Kansas), water conflict resolution & inter-county drain management (Michigan), petroleum standards (New Mexico), migrant labor housing inspection (Michigan), grain (Georgia), beginning farmer (Nebraska), farm mediation (Alabama, Colorado, Maryland, Missouri, Nebraska, North Dakota, Oregon, South Dakota, Utah, Wisconsin, Wyoming), water quality (Oregon) and wood products (New York). Arizona has an Agricultural Consultation & Training program which offers non-regulatory compliance assistance. Additional programs have been identified and this section will continue to be updated in the future.

In 49 states, the agriculture marketing program is housed in the NASDA member agency; this function is carried out in another agency in Wyoming. The Department of Agriculture of the State of Arizona only administers grant programs, while the State Regional Trade Group (SRTG) performs the export marketing functions in Iowa, New Hampshire and Rhode Island (see page 8 for additional information on the SRTGs). Seventeen states have their state fair as a part of the agency's responsibilities.

State agricultural agencies interact frequently with federal agencies and often have concurrent or complementary authorities, shared mutual responsibilities and formal cooperative agreements through which the state performs federal program responsibilities. For example, the United States Department of Agriculture (USDA) provides administrative oversight for agricultural programs on a national level while program delivery may be performed by state agencies. Some of these programs may include; apiary, animal health, conservation, egg (grading), forestry, market access

(domestic and international), meat inspection, organic program compliance, plant protection, seed and warehouse. Cooperative state programs with the Food & Drug Administration may include feed and food safety. Cooperative state programs with the Environmental Protection Agency may include conservation (e.g., non-point source pollution), pesticides and structural pest control.

Some programs administered by federal agencies do not have concurrent state programs; however, a state or regional office is found in most states. These may include: Farm Service Agency, Risk Management Agency, Rural Development and Cooperative Extension Service (which has state and often county offices). State departments of agriculture may assist in federal program implementation, e.g., disaster relief requests and disbursements. Research and education are also important federal program areas, which are mostly found in the land grant colleges and state universities at the state level.

As drafts of this publication circulate, additional programs administered by NASDA member agencies are being identified; as such, this will remain a living document. For example, efforts are underway to organize the legal counsels of state departments of agriculture into an affiliate organization.

NASDA MEMBERS

Each NASDA member is the senior executive of a stand-alone agricultural agency in most states and territories; two are division heads within other departments (Alaska, Rhode Island). One department is administered as a department from within a university infrastructure (New Mexico). NASDA member titles vary from Commissioner, Secretary, Director, Chief, Chairperson and Executive Director, but generally the members are referred to as “Commissioners, Secretaries and Directors of Agriculture for the fifty states and four territories.”

Twelve states elect their head agricultural official. Iowa elects a Secretary of Agriculture, while eleven states elect a Commissioner of Agriculture (Alabama, Florida, Georgia, Kentucky, Louisiana, Mississippi, North Carolina, North Dakota, South Carolina, Texas, West Virginia). In eleven states and one territory where NASDA members are appointed, the agency’s head title is Commissioner. These include: Colorado, Connecticut, Massachusetts, Maine, Minnesota, New Hampshire, New York, Oklahoma (Secretary/Commissioner), Tennessee, Utah, Virginia and Virgin Islands.

The title is Secretary in eleven states: Arkansas, California, Delaware, Iowa, Kansas, Maryland, New Jersey, Pennsylvania, South Dakota, Vermont and Wisconsin.

In fifteen states and two territories the title is Director: Alaska, American Samoa, Arizona, Guam, Idaho, Illinois, Indiana, Michigan, Missouri, Montana, Nebraska, Nevada, New Mexico (Director/Secretary) Ohio, Oregon, Washington and Wyoming. Puerto Rico refers to the head agriculture title as Executive Director.

The title is Chief in Rhode Island and Chairperson in Hawaii.

The membership in 2012 will include: one elected member that is a Democrat (West Virginia) and eleven elected members that are Republican (Alabama, Florida, Georgia, Iowa, Kentucky, Louisiana, Mississippi, North Carolina, North Dakota, South Carolina and Texas).

In 2012, nineteen appointed members will serve under Democratic Governors (American Samoa, Arkansas, California, Colorado, Connecticut, Delaware, Hawaii, Illinois, Maryland, Massachusetts, Minnesota, Missouri, Montana, New Hampshire, New York, Oregon, Vermont, Virgin Islands and Washington) and 23 appointed members will serve under Republican Governors (Arizona, Alaska, Guam, Idaho, Indiana, Kansas, Maine, Michigan, Nebraska, Nevada, New Jersey, New Mexico, Ohio, Oklahoma, Pennsylvania, Puerto Rico, Rhode Island, South Dakota, Tennessee, Utah, Virginia, Wisconsin and Wyoming).

AGENCY NAMES

All NASDA member agencies have the word “agriculture” or “agricultural” (Massachusetts) in their name; six departments have “food” in their name (California, Maine, New Hampshire, Oklahoma, Utah, Vermont); four have “consumer” in their name (Florida, North Carolina, Virginia and Wisconsin); three have “market” in their name (New Hampshire, New York, Vermont); two have “forestry” in their name (Louisiana and Oklahoma). Additional responsibilities found in agency titles include: commerce (Mississippi), industries (Alabama), land stewardship (Iowa), rural development (Michigan), rural resources (Maine) and trade (Wisconsin).

Not all states have all of these program areas within the department’s jurisdiction. In some states, program areas typically in a NASDA member’s agency are housed at universities (Connecticut, Indiana, Kentucky, Missouri, North Dakota, South Carolina and Texas) as are many of the seed certification programs. (See Appendix A).

REGIONAL ASSOCIATIONS

Four regional associations also exist among the NASDA membership. A revision of the by-laws in 2010 allows regional associations to chose to be a part of NASDA.

The following states are members of the Midwestern Association of State Departments of Agriculture (MASDA):

- Illinois, Indiana, Iowa, Kansas, Michigan, Minnesota, Missouri, Nebraska, North Dakota, Ohio, South Dakota and Wisconsin.

The following states are members of the Northeastern Association of State Departments of Agriculture (NEASDA):

- Connecticut, Delaware, Maine, Massachusetts, New Hampshire, New Jersey, New York, Pennsylvania, Rhode Island and Vermont.

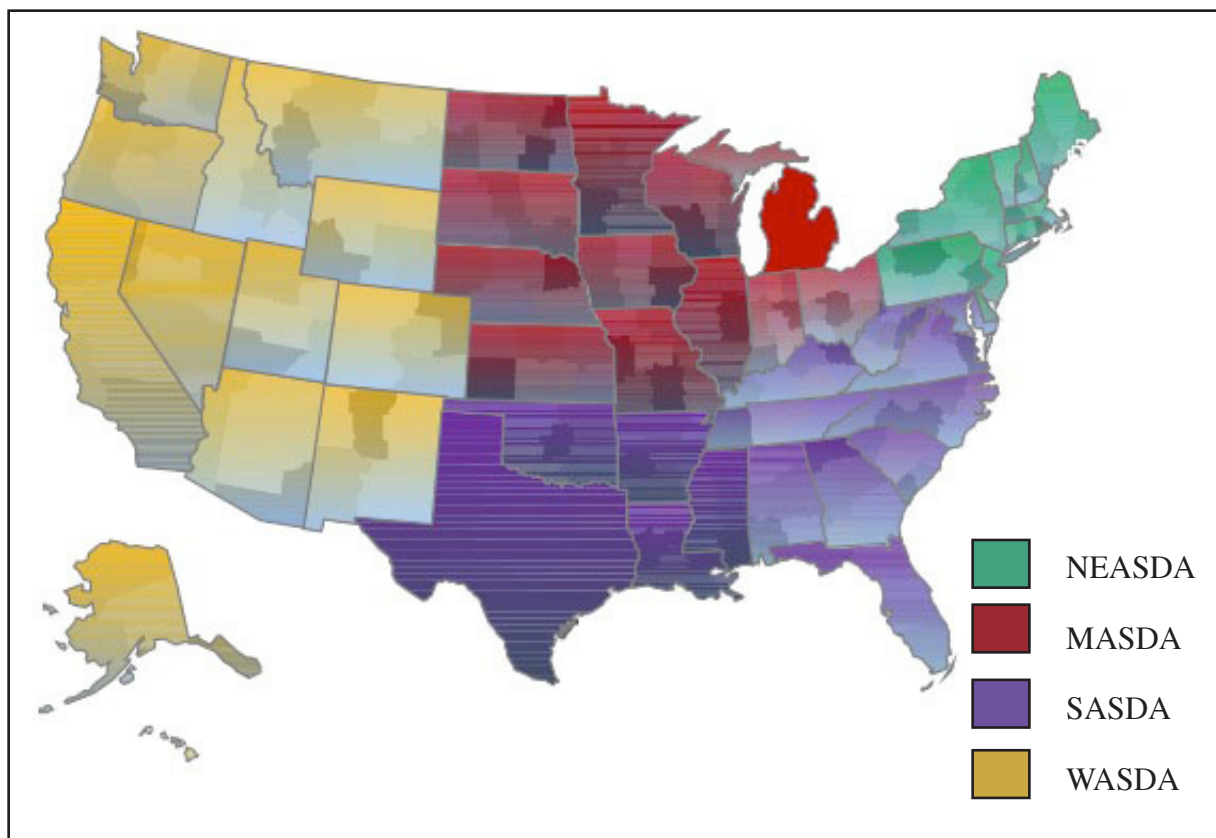
The following states and territories are members of the Southern Association of State Departments of Agriculture (SASDA):

- Alabama, Arkansas, Florida, Georgia, Kentucky, Louisiana, Maryland, Mississippi, North Carolina, Oklahoma, Puerto Rico, South Carolina, Tennessee, Texas, Virginia, Virgin Islands and West Virginia.

The following states and territories are members of the Western Association of State Departments of Agriculture (WASDA):

- Alaska, American Samoa, Arizona, California, Colorado, Guam, Hawaii, Idaho, Montana, Nevada, New Mexico, Oregon, Utah, Washington and Wyoming and the Canadian affiliates of Alberta and British Columbia.

Food Export Association of the Midwest USA, Western U.S. Agricultural Trade Association (WUSATA), Food Export USA Northeast, and Southern U.S. Trade Association (SUSTA) are non-profit state regional trade groups (SRTG's) that promote the export of U.S. food and agricultural products throughout the world, from their respective regions of the country. The SRTG's were first created as a cooperative effort between the State Agricultural Promotion Agencies and the United States Department of Agriculture Foreign Agricultural Service (FAS). The SRTG's, in conjunction with their member states, provide a wide range of export assistance.



NASDA BOARD

NASDA's Board of Directors is made up of five executive members: President, First Vice President, Second Vice President, Secretary/Treasurer and Past President; in addition, there is an at-large Member and a Designated Representative (generally the President) for each of the four regional associations (MASDA, NEASDA, SASDA and WASDA).

Theoretically, the Past President and the Secretary/Treasurer are from the same region, as the officers rotate through the chairs, i.e., each of the first four positions are from a different region. For example:

- The current President is from MASDA (Secretary Bill Northey, Iowa)
- The First Vice President is from SASDA (Commissioner Steve Troxler, North Carolina)
- The Second Vice President is from NEASDA (Commissioner Scott Soares, Massachusetts)
- The Secretary Treasurer is from WASDA (Chairperson Russell Kokubun, Hawaii)
- The immediate Past President is from WASDA (Commissioner Leonard Blackham)
- The Member At-large is from NEASDA (Secretary Ed Kee, Delaware)

The President of each region, or a designee, serves as Regional Representatives on the Board:

- Director Joe Kelsay (Indiana) for MASDA
- Commissioner Hugh Weathers (South Carolina) for SASDA
- Commissioner Chuck Ross (Vermont) for NEASDA
- Director Jason Fearnelyhough (Wyoming) for WASDA

The officers changed at the end of the Annual Meeting in Utah in the fall of 2011. New officers will be installed during the 2012 Annual Meeting in Des Moines, IA. The President appoints the chairs of the policy committees and other committees, task forces and working groups, often with input from and concurrence of the Board.

The rotation of the executive committee members and corresponding regions has to be course-corrected from time to time, as membership changes often do not adhere to the plans for rotation based on region. In addition, while NASDA is a nonpartisan organization, some planning and sensitivity to party affiliation is also practiced by the regions in filling positions on the board (this is not required by the bylaws).

MEETINGS

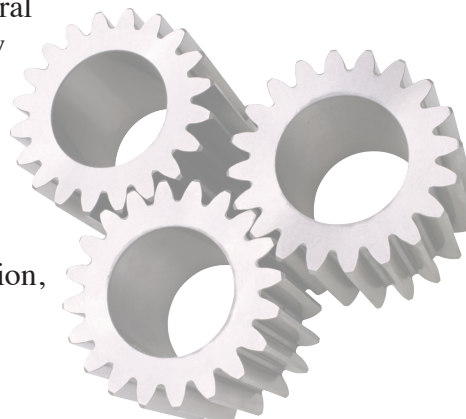
NASDA Meetings. NASDA is required by its bylaws to hold an annual meeting. As a matter of custom, the annual meeting is held in the fall in the home state of the current President; in addition, a policy conference/members' meeting is held in Washington, DC in February. This meeting focuses on legislative and regulatory issues. Special

meetings can also be held, generally for specific purposes, e.g., farm bill policy development. Each state or territory has one vote and only those members that have paid their state's dues can vote. The member or a proxy must be present to vote under most circumstances.

Tri-National Agricultural Accord. NASDA also participates in the Tri-National Agricultural Accord; this is an annual meeting of the Secretaries, Commissioners, Directors and Ministers of the Mexican and U.S. states and Canadian provinces to discuss concerns of mutual interest regarding trade practices between the three countries. This forum began in 1984 with meetings between the U.S. and Canada; the first trilateral meeting was held in 1992. Each country hosts the event once every three years.

COMMITTEES, TASK FORCES & WORKING GROUPS

NASDA has five standing Policy Committees. The Committees are: Animal & Plant Industries, Food Regulation & Nutrition, Marketing and International Trade, Natural Resources, Pesticide Management & Environment and Rural Development & Financial Security. Appendix B lists a few of the topical areas covered by each committee and the staff members who primarily work on those issues. Task Forces and Working Groups are used on specific topics and “report” to one or more of the standing Committees. NASDA members choose the committees, task forces and working groups in which they wish to participate. In addition, the board may chose to create and appoint members to committees, task forces and working groups, as deemed necessary.



Policy Development. Policies are established through discussion at the Committee level and voted on by the entire membership at either of the two yearly meetings. Actions taken by NASDA staff on behalf of the Membership must be consistent with existing policy; however, the policies are also under constant review and revision. The Board can change policy, when deemed necessary, between membership meetings; however, this option is used infrequently. Members, Regional Organizations, Policy Committees or Task Forces may propose policy additions, changes, amendments or deletions. NASDA staff and affiliate organizations may propose modifications as well; however, a member must agree to move these proposals forward. NASDA's policy document articulates the association's stance on a myriad of issues. The policy document provides a guide for policy staff for meetings with key officials and/or coalitions when speaking on behalf of its members. Policy positions remain in effect for three years.

THE ROLE OF NASDA

The office in Washington, DC is the connection point between the states and the NASDA members. Its primary responsibility is to be the eyes and ears in Washington, DC for its members. The staff carries out the priorities established by its members and its board. While members may focus on the priorities for their states, through contact with their Congressional delegation and their agencies interaction with the administrative agencies, NASDA staff focuses on national policy development, implementation and advocacy. Fortunately, NASDA staff is considered an extension of the members that they represent and, as the state elected and appointed officials are exempt from lobbying registration and reporting, so is the NASDA staff. This enhances the conduit for communications between state and federal elected and appointed officials.

NASDA's principle role in Washington, DC is its Public Policy Program – the Legislative and Regulatory Affairs efforts performed by its policy staff. Not all benefits to the states, however, are within the public policy arena. As a result, NASDA also seeks out and administers several Cooperative Agreements and/or federal contracts.

NASDA STAFF:

The staff that carries out NASDA's responsibilities includes:

- ***Executive Director.*** The chief administrator of NASDA is the Executive Director. The Executive Director is employed by and directly responsible to the NASDA Board of Directors. The Executive Director performs the duties necessary to promote the Association's mission and carry out daily operations. The Executive Director reports directly to the NASDA President.

✉ *Stephen Haterius, Executive Director -
stephen@nasda.org*

The following are the primary areas that report to the Executive Director:

- ***NASDA Policy Staff.*** NASDA Policy Staff is made up of four professionals that handle the Legislative and Regulatory Affairs efforts. The various public policy tasks are broken out consistent with the topics generally handled by the five Policy Committees and are assigned to staff with

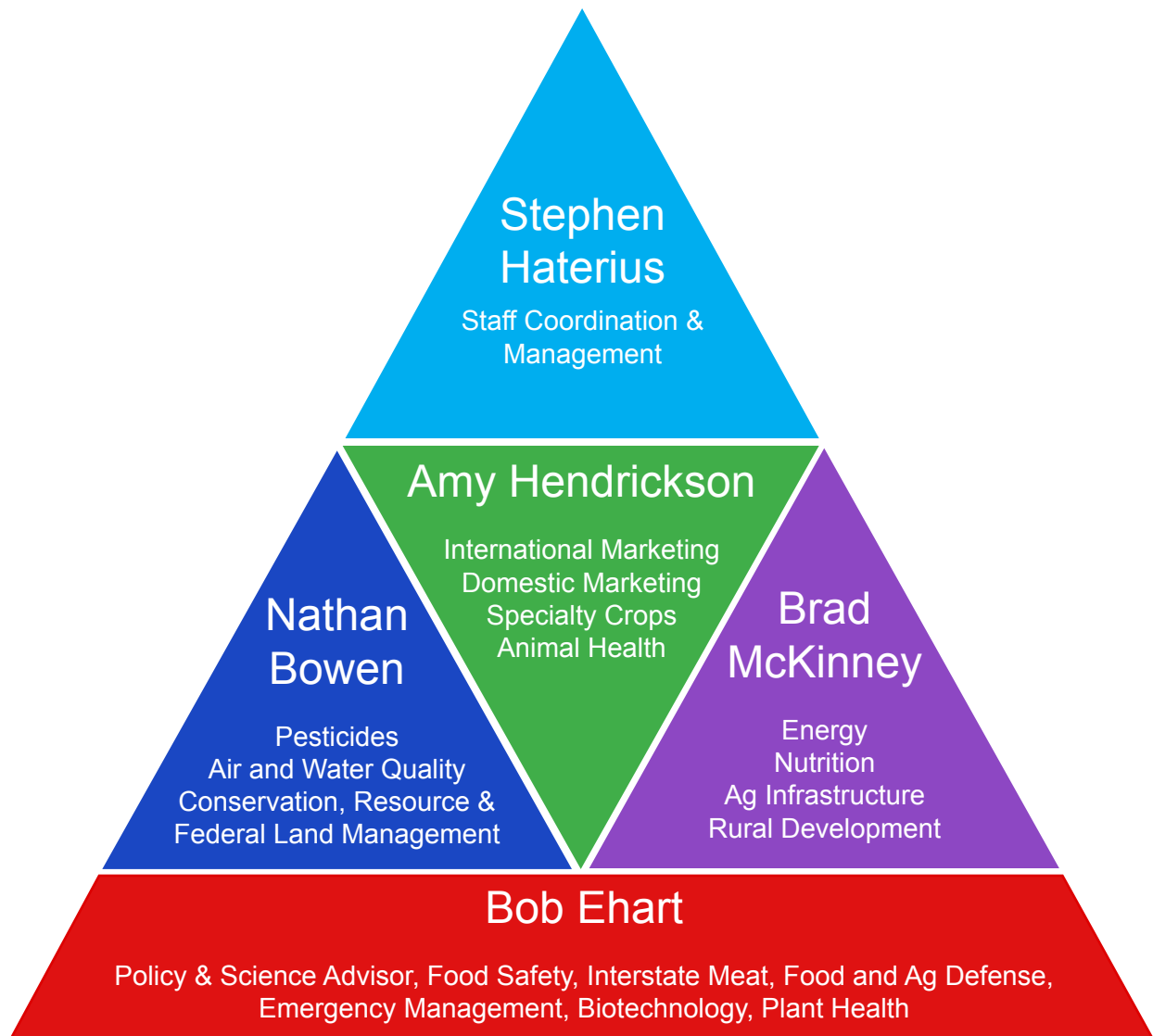
NASDA Staff serves as an extension of it's members, a connection between the state and Washington D.C. on policies of national importance - an interchange between the farm roads of the states and the superhighways that lead to Congress and the Administration. Food and agricultural policy are most successful when both roads are well cared for and properly maintained.



a lead and backup person designated for each policy area. Figure 1 identifies the policy area designated to each NASDA staff member. Appendix B provides a little more information on policy assignments.

NASDA policy staff can be reached at 202-296-9680 or by email. These staff members are:

- ☒ *Stephen Haterius, Executive Director - stephen@nasda.org*
- ☒ *Bob Ehart, Senior Policy and Science Advisor - bob@nasda.org*
- ☒ *Amy Hendrickson, Senior Director of Legislative and Regulatory Affairs - amy@nasda.org*
- ☒ *Nathan Bowen, Director of Legislative and Regulatory Affairs - nathan@nasda.org*
- ☒ *Brad McKinney, Specialist of Legislative and Regulatory Affairs - brad@nasda.org*



*Figure 1
Policy Unit Relationship and Organization*

- ***NASS Program Director.*** NASDA administers the enumeration staff for the National Agricultural Statistics Service (NASS). The NASS Program Director at NASDA administers the program through state level offices. This program area employs 3000 to 3700 part-time employees and works closely with USDA's NASS Program to assure proper coordination. This program was started through a cooperative grant between NASDA and NASS in 1978. The grant is in the range of \$25 – 30 million each year.

The NASS Program Director also manages the Agricultural Quality Inspection Service (AQIS) programs. AQIS is a not-for-profit 501(C)(6) organization created in 1997, which specifically works to achieve agreements and compliances. Two programs currently under AQIS include the Quality Assurance Agreement in Maine and the Environmental Policy & Compliance Assistance Program in Massachusetts.

✉ *NASS Program Director, Charlie Ingram - charlie@nasda.org*

- ***Trade Show Staff.*** NASDA conducts three Trade Shows, working closely with the National Restaurant Association, the World Trade Center Miami, the Food Marketing Institute, and USDA's Foreign Agricultural Service (FAS), which provides sponsorship through the Market Access Program (MAP). NASDA also works closely with FAS to provide upgrades to U.S. pavilions at overseas trade shows, to create real-time connectivity between FAS field offices overseas and state departments of agriculture, and to provide information services to state departments of agriculture and other FAS cooperator groups. This program is also the result of a cooperative agreement between NASDA and USDA. Two employees, a Director and an Assistant Director, run these programs for the association:

✉ *Director, DeWitt Ashby – dewitt@nasda.org*

✉ *Assistant Director, Megan McDonald – megan@nasda.org*

- ***Budget and Analysis.*** Financial oversight for the association and its various programs is provided by a Controller.

✉ *Controller, Debra Talbott – debra@nasda.org*

NASDA FOUNDATION

NASDA maintains a 501(C)(3) nonprofit foundation, which seeks out other cooperative agreements and contacts to focus on state programs and benefits to the NASDA membership. The NASDA Research Foundation was created in 1981 and provides agriculturally-oriented research, education and training to NASDA members, staff and others who qualify under grant guidelines.

- ***EPA Training Program Director.*** NASDA administers a pesticide training program grant from EPA through the Research Foundation. A Program Director oversees the EPA Training Program effort.

✉ *EPA Training Program Director, Carol Ramsay – carol@nasda.org*

- ***Intern Program.*** Nearly every semester, NASDA enjoys the assistance of one or more Texas A&M University intern(s) through its Agricultural and Natural Resources Policy Internship Program. NASDA provides an opportunity for college interns to view Washington, D.C. up close and personal. NASDA showcases the making of public policy and the managing and developing of administrative programs in a manner that provides insight not available in many other settings. From time to time, NASDA also has other intern opportunities.

NASDA AFFILIATES

NASDA has twenty-two active affiliate organizations (See Table). Affiliate organizations are made up of state or territorial officials involved in the regulation, promotion, or development of agricultural products or programs. In many instances, some aspect of the affiliates' work is done directly by or in conjunction with NASDA member agencies. (See Appendix A). Each affiliate organization is self-governing and may be asked to provide technical support to NASDA on a variety of issues.

Only one of the affiliates, Communication Officers of the State Departments of Agriculture (COSDA), has members from each of the NASDA agencies (plus those from state agencies with similar missions, e.g., animal health/livestock boards/commissions). In some states, the Communication Officer position is part of another job responsibility (less than one FTE) or the position is vacant. IT professionals are also present in each of the fifty states agencies; however, the National Association of State Agriculture Technology Officials has not been active recently and has officially disbanded pending any reorganization efforts that may be made in the future. Other affiliate memberships and the relationship with agriculture agencies vary depending upon where the specific authority rests within each state. The table on the following page summarizes information on affiliate membership within the fifty states and Puerto Rico.² (Also see Appendix A for a summary of program areas by state).

² Some states have indicated having membership in the AOAC (Association of Official Analytical Chemists). In a subsequent revision of this publication we may add AOAC as an affiliate organization.

***NASDA members
are more than just
stakeholders with the
federal government.
We are partners***

NASDA Member Overview

<i>Affiliate Organization</i>	<i>Number of participating NASDA member states</i>
AIA—Apiary Inspectors of America	47 States (3 states not in NASDA agency: CT, IN, SC)
AASCO—Association of American Seed Control Officials	47 States (3 states not in NASDA agency: IN, KY, ND)
AAFCO—Association of American Feed Control Officials	47 States & PR (3 states not in NASDA agency: IN, KY, TX)
AAPCO—Association of American Pesticide Control Officials	43 States & PR (7 states not in NASDA agency: AK, CA, CT, IN, NJ, NY, SC)
AAPFCO—Association of American Plant Food Control Officials	45 States & PR (5 states not in NASDA agency: IN, KY, MO, SC, TX – all in Universities)
AFDO—Association of Food and Drug Officials	20 States (AL, FL, GA, KS, ME, MD, MI, MN, NE, NY, NC, OR, PA, TN, UT, VI, WA, WV, WI, WY)
AFVISA—Association of Fruit and Vegetable Inspection and Standardization Agencies	22 States (AL, AZ, CA, CO, DE, FL, HA, ID, MD, ME, MI, MT, NJ, NM, NY, NC, OR, PA, TX, VA, WA) (One state not in NASDA agency: GA)
AGRO—Association of Grain Regulatory Officials previously known as: AAWCO—Association of American Warehouse Control Officials	27 States (AL, AR, CO, GA, ID, IL, IN, IA, KS, KY, LA, MD, MI, MN, MS, MO, MT, NY, OH, OK, OR, SC, TN, TX, VA, WI, WY) 3 states have in PSC (NE, ND, SD)
AOSA—Association of Official Seed Analysts	39 States (11 states not in NASDA agency: CO, CT, ID, IN, KY, MT, NY, ND, OR, SD, WY – all in Universities)
ASPCRO – Association of Structural Pest Control Regulatory Officials	26 States (AL, AR, CO, DE, FL, GA, KS, LA, MD, MN, MS, MO, NE, NM, NC, OH, OK, PA, TN, TX, VA, WA, WV, WI, WY, PR) Other States with programs: AZ, CA, IN, NJ, SC
COSDA—Communications Officers of the State Departments of Agriculture	50 States
IAMCA—International Association of Milk Control Agencies	47 States (3 states not in NASDA agency: CO, KY, ND)
NAAFA – National Association of Agricultural Fair Agencies	12 States (CA, IL, KY, ME, MA, MI, NC, OH, PA, TN, WA, WI)
NAAMO—North American Agricultural Marketing Officials	49 States (WY not in NASDA agency)
NADRO—National Association of Dairy Regulatory Officials	27 States (AZ, CA, CT, FL, GA, ID, IA, KS, KY, ME, MA, MI, MN, NE, NM, NY, ND, OH, OK, OR, PA, TN, VT, WA, WV, WI, WY)
NASAC—National Association of State Aquaculture Coordinators	34 States (16 states not in NASDA agency: AK, CA, GA, IN, IA, KS, ME, NV, NH, NM, NY, ND, OH, WA, WI, WY [RI has no program])
NASAHO—National Assembly of State Animal Health Officials	40 States (10 states not in NASDA agency: AK, IN, MN, MS, MT, NM, SC, SD, TX, WY)
NASATO—National Association of State Agriculture Technology Officials	50 States, although this affiliate is inactive at the present time.
NASMFID—National Association of State Meat and Food Inspection Directors	22 States (AL, AZ, DE, GA, IA, IL, KS, LA, ME, MN, MO, MS, NC, ND, OH, OK, WI, WV, WY, UT, VA, VT) (Five states not in NASDA agency: IN, MT, SC, SD, TX)
NASOP—National Association of State Organic Programs	48 States (2 states not in NASDA agency: NV, WY)
NCWM—National Conference on Weights & Measures	33 States (17 states not in NASDA agency: AK, AZ, CT, HI, ID, IN, MA, MN, MT, ND, NJ, NY, NV, PA, RI, SD, WV)
NERO—National Egg Regulatory Officials	29 States (AL, AR, AK, CA, DE, FL, HA, IL, KS, KY, LA, ME, MD, MO, MS, NH, NJ, NC, OH, OK, PA, RI, SC, SD, UT, VT, VA, WA, WV, WI) (One state not in NASDA agency: IN)
NPB—National Plant Board	46 States & PR (4 states not in NASDA agency: CT, IN, KY, SC)

NASDA.ORG

ISSUES AND ANSWERS

NASDA maintains a web site that provides information on a variety of member services, policy issues and legislative affairs. Topics covered at nasda.org include areas such as:

- Farm Bill
- Animal and Plant Issues
- Biotechnology
- Conservation
- Domestic Marketing
- Food Emergency Response
- Agriculture Security
- Food Regulation and Safety
- Plant and Animal Health
- Rural Development
- Pesticide Regulation



MEMBER SERVICES

Nasda.org also provides a variety of member services such as an online member directory, affiliate listing, and the association by-laws. The website has links to useful resources and provides information and updates on various NASDA programs and services.

NEWS AND INFORMATION

The NASDA website provides regular news and information on issues important to the agriculture industry. Look to the website to stay informed on news from Washington, D.C. and around the country with both state and national updates. Read the most current NASDA Newsletters and search the archives for past editions. Interested parties can also receive an electronic version of “NASDA-News”. Annual Reports are also made available on the site.

PAST NASDA LEADERS

Appendix C provides a chronological list of past presidents and presidents-elect (now First Vice Presidents) of NASDA

APPENDIX A

Summary Table of Program Areas for Each State

(following page)

The table on the following page provides an overview of each state and the program areas that fall within each department of agriculture. The states may not be members of the affiliate associated with each program area listed. See page 12 for a listing of states that participate in affiliate organizations.

STATE	PIO / COSDA	Animal Health	Aquaculture	Bees	Conservation	Egg	Fairs	Farmland Protection	Feed	Fertilizer	Food Safety - Food	Food Safety - Meat	Forestry	F&V Inspection	Grain Regulation	Marketing	MIR/AMCO	MILK/NADRO	Organic	Pesticides	Structural Pest Cont	Plant Health	Seeds /AASCO	Seeds /AOSA	Weights & Measures	
AL	X	X	X	X		X			X	X	X	X		X	X	X	X		X	X	X	X	X	X	X	
AK	X		X	X					X	X						X	X		X	X		X	X	X	X	X
AZ	X	X	X			X			X	X	X	X		X		*	X	X		X		X	X	X	X	X
AR	X	X		X		X			X	X					X	X	X		X		X	X	X	X		
CA	X	X		X		X	X		X	X				X		X	X	X	X			X	X	X	X	X
CO	X	X	X	X	X	X	X		X	X				X	X	X			X	X	X	X	X		X	X
CT	X	X	X	X				X	X	X						X	X	X	X					X		
DE	X	X	X	X		X		X	X	X		X	X	X		X	X		X	X	X	X	X	X	X	X
FL	X	X	X	X	X	X		X	X	X	X		X	X		X	X	X	X	X	X	X	X	X	X	X
GA	X	X		X		X	X		X	X	X	X		X	X	X	X	X	X	X	X	X	X	X	X	X
HI	X	X	X	X		X			X	X				X		X	X		X	X		X	X	X		
ID	X	X	X	X		X			X	X				X	X	X	X	X	X	X	X	X	X	X		
IL	X	X	X	X	X	X	X	X	X	X	X	X			X	X	X		X	X		X	X	X	X	X
IN	X														X	X	X		X							
IA	X	X		X	X				X	X		X			X	X	X	X	X	X	X		X	X	X	X
KS	X	X		X	X	X			X	X	X	X			X	X	X	X	X	X	X	X	X	X	X	X
KY	X	X	X			X	X	X							X	X		X	X	X						X
LA	X	X	X	X	X	X			X	X	X	X	X	X	X	X	X	X	X	X	X	X	X	X	X	X
ME	X	X		X	X	X	X		X	X	X	X				X	X	X	X	X		X	X	X	X	X
MD	X	X	X	X	X	X	X	X	X	X				X	X	X	X		X	X	X	X	X	X	X	X
MA	X	X	X	X			X	X	X	X						X	X	X	X	X		X	X	X		
MI	X	X	X	X	X	X	X	X	X	X	X			X	X	X	X	X	X	X		X	X	X	X	X
MN	X		X	X					X	X	X	X			X	X	X	X	X	X	X	X	X	X		
MS	X		X	X		X			X	X	X	X			X	X	X		X	X	X	X	X	X	X	X
MO	X	X	X	X		X			X			X		X	X	X	X	X	X	X	X	X	X	X	X	X
MT	X		X	X					X	X		X		X	X	X	X		X	X		X	X			
NE	X	X	X	X					X	X	X					X	X	X	X	X	X	X	X	X	X	X
NV	X	X	X	X					X	X		X				X	X			X		X	X	X		
NH	X	X		X		X		X	X	X						X	X		X	X		X	X	X	X	X
NJ	X	X	X	X	X	X	X	X	X	X	X			X		X	X	X	X			X	X	X		
NM	X			X	X	X			X	X				X		X	X	X	X	X	X	X	X	X	X	X
NY	X	X		X	X				X	X	X	X		X	X	X	X	X	X			X	X			
NC	X	X	X	X		X	X	X	X	X	X	X	X	X		X	X		X	X	X	X	X	X	X	X
ND	X	X		X					X	X		X				X		X	X	X		X				
OH	X	X	X	X		X	X	X	X	X	X	X		X	X	X	X	X	X	X	X	X	X	X	X	X
OK	X	X	X	X		X		X	X	X		X	X		X	X	X	X	X	X	X	X	X	X	X	X
OR	X	X	X	X	X	X		X	X	X	X			X	X	X	X	X	X	X		X	X			X
PA	X	X	X	X	X	X	X	X	X	X	X	X	X	X		X	X	X	X	X	X	X	X	X	X	X
PR									X	X											X	X				
RI	X	X		X		X		X	X	X						X	X		X	X		X	X	X		
SC	X		X	X		X			X						X	X	X		X				X	X	X	X
SD	X		X	X	X	X	X		X	X		X				X	X		X	X		X	X	X		
TN	X	X	X	X	X		X	X	X	X	X		X		X	X	X	X	X	X	X	X	X	X	X	X
TX	X		X	X								X		X	X	X	X		X	X	X	X	X	X	X	X
UT	X	X	X	X	X	X		X	X	X	X	X		X		X	X	X	X	X		X	X	X	X	X
VT	X	X	X	X	X	X		X	X	X		X				X	X	X	X	X	X	X	X	X	X	X
VA	X	X	X	X		X		X	X	X	X	X		X	X	X	X	X	X	X		X	X	X	X	X
WA	X	X		X		X	X		X	X	X			X	X	X	X	X	X	X	X	X	X	X	X	X
WV	X	X	X	X		X		X	X	X	X	X		X		X	X	X	X	X	X	X	X	X		
WI	X	X	X	X	X	X	X	X	X	X	X	X		X	X	X	X	X	X	X	X	X	X	X	X	X
WY	X			X	X				X	X	X	X			X		X	X	X	X	X	X	X			X

* administers grant program only

APPENDIX B
NASDA POLICY STAFF ASSIGNMENTS

STEPHEN HATERIUS

Executive Director
Policy Staff Coordination

AMY HENDRICKSON	NATHAN BOWEN	BRAD MCKINNEY	BOB EHART
Senior Director, Legislative and Regulatory Affairs KEY ISSUE AREAS: Animal Industries & Health International Trade Domestic Marketing Specialty Crops Immigration	Director, Legislative and Regulatory Affairs KEY ISSUE AREAS: Environmental Regulation Pesticides Conservation Natural Resources Public Land Management	Legislative and Regulatory Affairs Specialist KEY ISSUE AREAS: Financial Security Rural Development Energy Nutrition Ag Infrastructure	Senior Policy and Science Advisor KEY ISSUE AREAS: Food Safety Food & Ag Defense Biotech Plant Industries Emergency Management
KEY FEDERAL AGENCIES: APHIS, FAS, GIPSA, USTR	KEY FEDERAL AGENCIES: EPA, NRCS, Forest Service	KEY FEDERAL AGENCIES: FSA, RMA, USDA-Rural Development	KEY FEDERAL AGENCIES: FDA, DHS, FSIS, APHIS
NADSA COMMITTEES: Marketing & International Trade* Animal & Plant Industries*	NADSA COMMITTEES: Natural Resources, Pesticide Management & Environment*	NADSA COMMITTEES: Rural Dev. & Financial Security * Food Regulation & Nutrition	NADSA COMMITTEES: Food Regulation & Nutrition* Animal & Plant Industries
703-981-9745 (Mobile) amy@nasda.org	202-538-7660 (Mobile) nathan@nasda.org	317-626-3000 (Mobile) brad@nasda.org	202-373-9070 (Mobile) bob@nasda.org

* Committee Lead

APPENDIX C NASDA PAST PRESIDENTS 1916 - 2011

Year	President	State	Region	President-Elect	State
1916	George W. Koiner	VA	SASDA		
1917	E. J. Watson	SC	SASDA	W. T. Guptil	ME
1918	Charles S. Wilson	NY	NEASDA	Charles McCaffree	SD
1919	Charles S. Wilson	NY		Charles McCaffree	SD
1919-1920	Fred W. Davis	TX	SASDA	Alva Agee	NJ
1920-1921	Alva Agee	NJ	NEASDA	F. H. Gloyd	WA
1921-1922	C. P. Norgard	WI	MASDA	George W. Koiner	VA
1922-1923	George W. Koiner	VA	SASDA	N. J. Holmberg	MN
1923-1924	N. J. Holmberg	MN	MASDA	J. C. Mohler	KS
1924-1925	J. C. Mohler	KS	MASDA	B. M. Davidson	IL
1925-1926	Jewell Mayes	MO	MASDA	Berne A. Pyke	NY
1926-1927	Berne A. Pyke	NY	NEASDA	W. A. Graham, Jr.	NC
1927-1928	W. A. Graham, Jr.	NC	SASDA	G. H. Hecke	CA
1928-1929	G. H. Hecke	CA	WASDA	Andrew L. Felker	NH
1929-1930	Andrew F. Felker	NH	NEASDA	Mark G. Thornburg	IN
1930-1931	Mark G. Thornburg	IA	MASDA	Harry D. Wilson	LA
1931-1932	Harry D. Wilson	LA	SASDA	William B. Duryee	NJ
1932-1933	William B. Duryee	NJ	NEASDA	A. H. Stafford	MT
1933-1934	A. H. Stafford	MT	WASDA	Edward H. Jones	VT
1934-1935	Edward H. Jones	VT	NEASDA	J. C. Holton	MS
1935-1936	J. C. Holton	MS	SASDA	Walter McLaughlin	IL
1936-1937	Walter McLaughlin (resigned)	IL	MASDA	D. E. VanCleave	TN
	A. A. Brock	CA	WASDA	Nathan Mayo	FL
1937-1938	A. A. Brock	CA		Nathan Mayo	FL
1938-1939	Nathan Mayo	FL	SASDA	Olcott F. King	CT
1939-1940	Olcott F. King	CT	NEASDA	J. H. Lloyd	IL
1940-1941	J. H. Lloyd (resigned)	IL	MASDA	J. Roy Jones	SC
	J. Roy Jones	SC	SASDA	R. A. Trovatten	MN
1941-1942	R. A. Trovatten	MN	MASDA	W. C. Sweinhart	CO
1942-1943	R. A. Trovatten	MN		W. C. Sweinhart	CO
1943-1944	W. C. Sweinhart	CO	WASDA	H. K. Thatcher	AR
1944-1945	H. K. Thatcher	AR	SASDA	Rufus M. Howard	NE
1945-1946	Rufus M. Howard	NE	MASDA	W. Kerr Scott	NC
1946-1947	W. Kerr Scott	NC	SASDA	Ervin L. Peterson	OR
1947-1948	Ervin L. Peterson	OR	WASDA	Willard H. Allen	NJ
1948-1949	Willard H. Allen	NJ	NEASDA	Harry D. Linn	IA
1949-1950	Harry D. Linn (resigned)	IA	MASDA	Si Corley	MS
	Si Corley	MS	SASDA		
1950-1951	Si Corley	MS		Sverre Omdahl	WA

Year	President	State	Region	President-Elect	State
1951-1952	Sverre Omdahl	WA	WASDA	C. Chester Dumond	NY
1952-1953	C. Chester DuMond	NY	NEASDA	Charles Figy	MI
1953-1954	Roy Freeland	KS	MASDA	Harold Hutton	OK
1954-1955	Harold Hutton	OK	SASDA	W. C. Jacobsen	CA
1955-1956	W. C. Jacobsen	CA	WASDA	Perley I. Fitts	NH
1956-1957	Perley I. Fitts	NH	NEASDA	Donald McDowell	WI
1957-1958	Donald McDowell	WI	MASDA	Parke C. Brinkley	VA
1958-1959	Parke C. Brinkley	VA	SASDA	Paul W. Swisher	CO
1959-1960	Paul W. Swisher	CO	WASDA	William L. Henning	PA
1960-1961	William L. Henning	PA	NEASDA	John Sam Williamson	MT
1961-1962	George McIntyre	MI	MASDA	L. Y. Ballentine	NC
1962-1963	L. Y. Ballentine	NC	SASDA	Dallas G. Rierson	NM
1963-1964	Dallas G. Rierson	NM	WASDA	Phillip Alampi	NJ
1964-1965	Phillip Alampi	NJ	NEASDA	R. B. Wilson	IN
1965-1966	R. B. Wilson	IN	MASDA	W. F. Moss	TN
1966-1967	W. F. Moss	TN	SASDA	Stanley I. Trenhaile	ID
1967-1968	Stanley I. Trenhaile	ID	WASDA	Don J. Wickham	NY
1968-1969	Don J. Wickham	NY	NEASDA	Robert Schneider	IL
				B. Dale Ball	MI
1969-1970	B. Dale Ball	MI	MASDA	Doyle Conner	FL
1970-1971	Doyle Conner	FL	SASDA	Don Moos	WA
1971-1972	Maynard Dolloff	ME	NEASDA	Don Wilkinson	WI
1972-1973	Maynard Dolloff	ME	NEASDA	Don Wilkinson	WI
1973-1974	Don Wilkinson	WI	MASDA	Gus R. Douglass	WV
1974-1975	Gus R. Douglass	WV	SASDA	L. D. McCorkindale	AZ
1975-1976	L. D. McCorkindale	AZ	WASDA	Howard C. Townsend	NH
1976-1977	Howard C. Townsend	NH	NEASDA	John M. Stackhouse	OH
1977-1978	John M. Stackhouse	OH	MASDA	James A. Graham	NC
1978-1979	James A. Graham	NC	SASDA	W. P. Stephens	NM
1979-1980	W. P. Stephens	NM	WASDA	Frederic Winthrop, Jr.	MA
1980-1981	Frederic Winthrop, Jr.	MA	NEASDA	Robert H. Lounsberry	IA
1981-1982	Robert H. Lounsberry	IA	MASDA	Jim Buck Ross	MS
1982-1983	Jim Buck Ross	MS	SASDA	Leonard Kunzman	OR
1983-1984	Leonard Kunzman	OR	WASDA	Penrose Hallowell	PA
1984-1985	Penrose Hallowell (resigned)	PA	NEASDA	James B. Boillot	MO
	Larry A. Werries	IL	MASDA	Tommy Irvin	GA
1985-1986	Larry A. Werries	IL		Tommy Irvin	GA
1986-1987	Tommy Irvin	GA	SASDA	Thomas W. Ballow	NV
1987-1988	Thomas W. Ballow	NV	WASDA	Arthur R. Brown, Jr.	NJ

Year	President	State	Region	President-Elect	State
1988-1989	Arthur R. Brown, Jr.	NJ	NEASDA	Paul E. Kinginger (resigned)	MI
				S. Mason Carbaugh	VA
1989-1990	S. Mason Carbaugh	VA	SASDA	C. Alan Pettibone	WA
1990-1991	C. Alan Pettibone	WA	WASDA	Terry D. Strueh	IN
1991-1992	Terry D. Strueh	IN	MASDA	Stephen H. Taylor	NH
1992-1993	Stephen H. Taylor	NH	NEASDA	Robert F. Odom	LA
1993-1994	Robert F. Odom	LA	SASDA	Bruce Andrews	OR
1994-1995	Bruce Andrews	OR	WASDA	Alan T. Tracy	WI
1995-1996	Alan T. Tracy	WI	MASDA	John F. Tarburton	DE
1996-1997	John F. Tarburton	DE	NEASDA	D. Leslie Tindal	SC
1997-1998	Dr. Leslie Tindal	SC	SASDA	Cary Peterson	UT
1998-1999	Cary Peterson	UT	WASDA	Fred Dailey	OH
1999-2000	Fred Dailey	OH	MASDA	Leon Graves	VT
2000-2001	Leon Graves	VT	NEASDA	Billy Ray Smith	KY
2001-2002	Billy Ray Smith	KY	SASDA	Sheldon Jones (resigned)	AZ
				Pat Takasugi	ID
2002-2003	Pat Takasugi	ID	WASDA	Gene Hugoson	MN
2003-2004	Gene Hugoson	MN	MASDA	Nathan Rudgers	NY
2004-2005	Nathan Rudgers	NY	NEASDA	Carlton Courter III	VA
2005-2006	Carlton Courter III	VA	SASDA	Valoria Loveland	WA
2006-2007	Valoria Loveland	WA	WASDA	Roger Johnson	ND
2007-2008	Roger Johnson	ND	MASDA	Ron Sparks	AL
Year	President	State	Region	First Vice-President	State
2008-2009	Ron Sparks	AL	SASDA	Michael Scuse (resigned)	DE
				Ed Kee	DE
2009-2010	Ed Kee	DE	NEASDA	Leonard Blackham	UT
2010-2011	Leonard Blackham	UT	WASDA	Bill Northey	IA
2010-2012	Bill Northey	IA	MASDA	Steve Troxler	NC

*National Association
State Departments of Agriculture
1156 15th Street N.W.
Suite 1020
Washington, D.C.
202-296-9680
www.nasda.org*